

STH1840E



Configurations

| Item | Parameter |
|----------------------|----------------------------|
| Engine | CUMMINS QSF3.8 STAGE III |
| Power | 93 kw |
| Gearbox | DANA-367 |
| Axle | DANA 212HY |
| Tyre | 400/80R24 |
| Boom Frame | 4 Sections Telescopic Boom |
| Steering Drive Model | 4WD/3 Steering Models |
| Fuel Tank Capacity | 150 L |

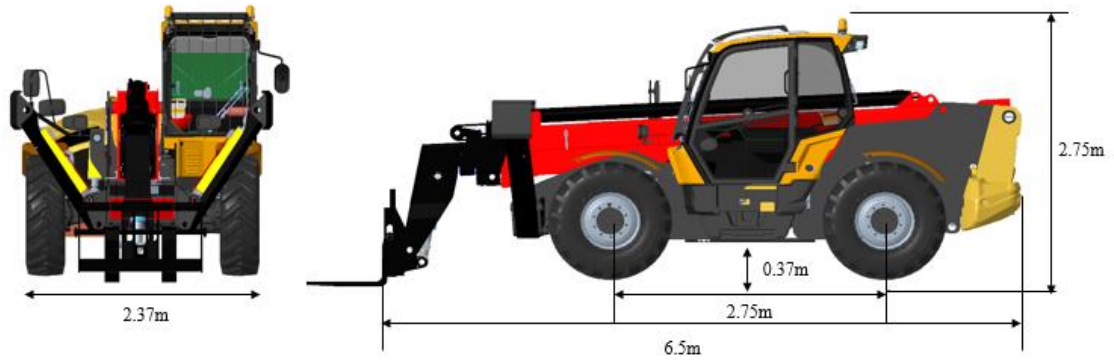
Dimension

Performance

| Item | Unit | Parameter |
|--------------------------|------|----------------|
| Weight | kg | 12300 |
| L*W*H | mm | 6220×2426×2595 |
| Wheel Base | mm | 2750 |
| Minimum Turning Radius | m | 3.85 |
| Minimum Ground Clearance | m | 0.37 |
| Frame Leveling Angle | ° | ±10 |
| Maximum Drive Speed | km/h | 30 |
| Maximum Traction | kN | 88 |

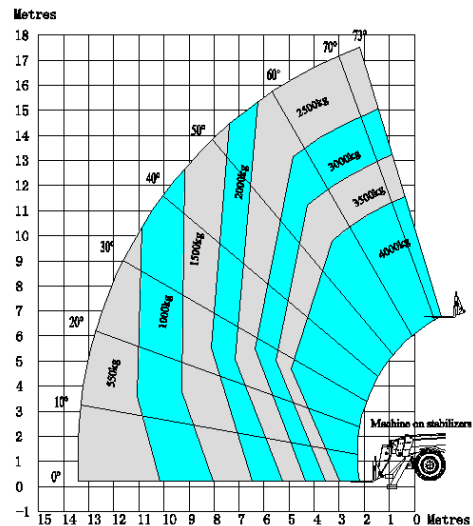
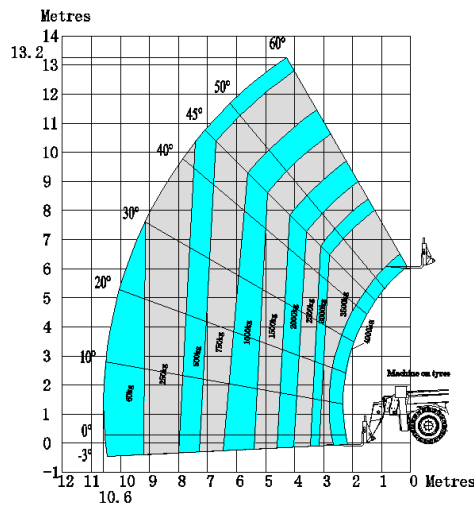
| Item | Unit | Parameter |
|--|------|-----------|
| Rated Capacity | kg | 4000 |
| Lift Capacity at Maximum Height | kg | 2500 |
| Lift Capacity at Maximum Reach | kg | 550 |
| Lift Capacity at Maximum Height (with outrigger) | kg | 500 |
| Lift Capacity at Maximum Reach (with outrigger) | kg | 60 |
| Lifting Capacity | m | 17.50 |
| Maximum Forward Reach | m | 13.4 |
| Maximum Elevation Angle | ° | 70 |
| Maximum Depression Angle | ° | -3 |
| Maximum Lifting Speed | s | 18/13 |
| Maximum Descending Speed | s | 21/19 |
| Fork Arm Extend Speed | s | 5 |
| Fork Arm Retract Speed | s | 5 |

STH1840E



STH1840E Machine on tyres with forks - with Metric

STH1840B Machine on stabilizers with forks - with Metric

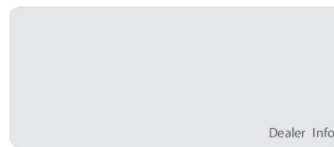


SANY MARINE HEAVY INDUSTRY CO., LTD.

SANY Industrial Park, Gaolan Port Economic and Development Zone, Zhuhai, Guangdong, China

Tel +86-756-7266963 Service +86-4008-87-8318

Materials and specifications are subject to change without prior notice. Featured machines in photos may include additional equipment.
© 2021 SANY. All Rights Reserved.



Dealer Info

